

Accountancy
Gemak



Software
Gemak

An Exact Company



Manual

DataCollector 3.0

Exact MKB Software B.V.
Ptolemaeuslaan 70
3528 BP Utrecht

Phone	+31 184 44 44 44
Support line	+31 88 247 24 72
Customer Portal	https://mijn.supportgemak.nl
Internet	http://www.accountancygemak.nl http://www.softwaregemak.nl

Copyright 2021 Exact MKB Software B.V. and/or its group companies. All rights reserved.

All rights reserved. No part of this book may be reproduced, stored in a retrieval system, or transmitted in any form, by print, microfilm, or by any other means, without written permission from the publisher.

The information contained in this book can be amended without prior warning. Unless otherwise, the companies, persons, data and addresses mentioned in this book are functional. Although the utmost care has been taken to produce this book, we do not accept any liability for any printing or other errors or incomplete information. All trade marks referred to in this book are the property of their respective owners.

Content

1.	Introduction	3
2.	System requirements.....	4
3.	Exporting the financial data	5
3.1.	Step 1: Select the financial package/ERP system.....	5
3.2.	Step 2: Specify the selection data	6
3.3.	Step 3: Specify the file location.....	6
3.4.	Result	8

1. Introduction

DataCollector is a user-friendly program used to quickly export financial data from various financial packages and ERP systems, such as Multivers and Exact and ERP systems such as SAP and Oracle. The data can subsequently be imported into Account Analysis, an application for numbers-based auditing and analysis of a set of accounts.

2. System requirements

DataCollector is provided as a run/time version. The advantage is that it can be used immediately (for example, from an USB flash drive) without requiring an installation. If you want to leave DataCollector for a customer, you can copy the complete run/time folder the customer's system. Again, no installation is required.

DataCollector should be started from a local disk; it can also be a USB flash drive. To start DataCollector from a network drive is not possible.

The user has to have writing permission for the export file location. The available drive capacity should be sufficient to save the export file. Usually 1 or 2 GB is more than enough, but that depends on the quantity of data to be exported.

DataCollector can be used on Windows XP SP 2 or higher. The installation of Microsoft .NET Framework 4.5.2 or higher is required. This is installed as standard on most Windows operating systems. If this is not the case, download the Microsoft .NET Framework installation package from the following website:

<https://www.microsoft.com/en-us/download/details.aspx?id=30653>

DataCollector does not operate on Citrix nor Terminal Services Remote Applications 2008.

Custom-made modifications in the ERP database or in the financial package database are not supported. Extraction of a consolidated company is not supported, only subsidiary or single companies are supported.

DataCollector operates on a PC on which a West-European language is selected in the country settings. It does not operate when the PC language has a different character set, for example, Sanskrit (India).

3. Exporting the financial data

Follow the steps below to export the financial data:

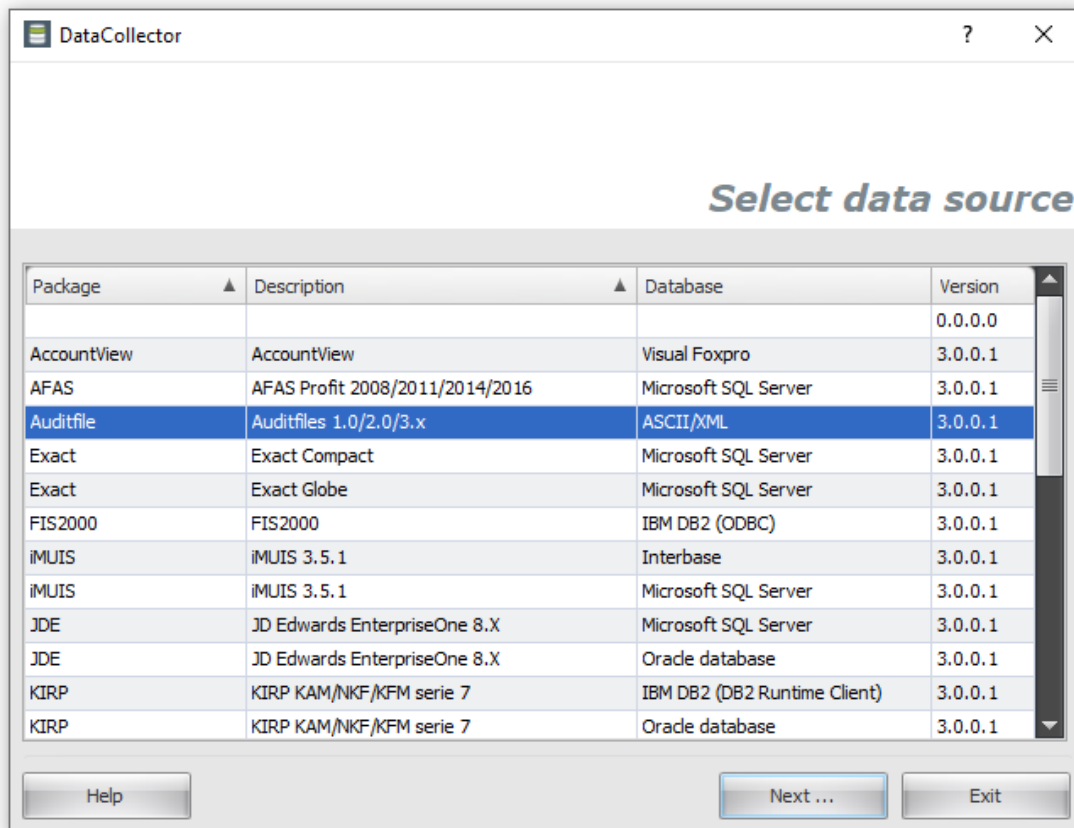
Step 1: Start the software and select the financial package/ERP system.

Step 2: Select the required selection data depending on the selected financial package/ERP system.

Step 3: Specify the file location.

3.1. Step 1: Select the financial package/ERP system

Start DataCollector. The following window is displayed:



Select the financial package/ERP system and click the  button.

Then it will be checked if the version of the reader of the financial application selected is equal to the version of DataCollector. For example, if the reader is version 2.0 and DataCollector is version 3.0, you receive the following message: "Package version (2.0) conflicts with DataCollector version (3.0). Extraction is not possible."

3.2. Step 2: Specify the selection data

Specify the selection data. The data depends on the financial package/ERP system and is described in the manual for the financial package/ERP system concerned.

Independently of the selected financial package/ERP system, at least the following steps should be performed:

- Specify the database connection.
- Select the company.
- Select the entities.
- Select the financial year and periods.

Other data may be required depending on the selected financial package/ERP system. Refer to the manual for the financial package/ERP system concerned for more information.



The entered data is stored per financial package/ERP system. When you next export the data from the financial package/ERP system concerned, the data which you entered the previous time is displayed.



The entered passwords are not saved for security reasons.

3.3. Step 3: Specify the file location

In this window you indicate where to save the export file.

Key	Value
filename	C:\Temp\9428245.xaf
company	250493
periodfirst	0
periodlast	12
Entities	

Filename: C:\Temp\250493(0-2020#12-2020).czt

Use password: ☐

Password:

Verify:

Client number:

Client name:


Buttons: Help, Previous ..., Next ... (highlighted), Exit

A summary of the entered selection data is displayed at the top of the window.

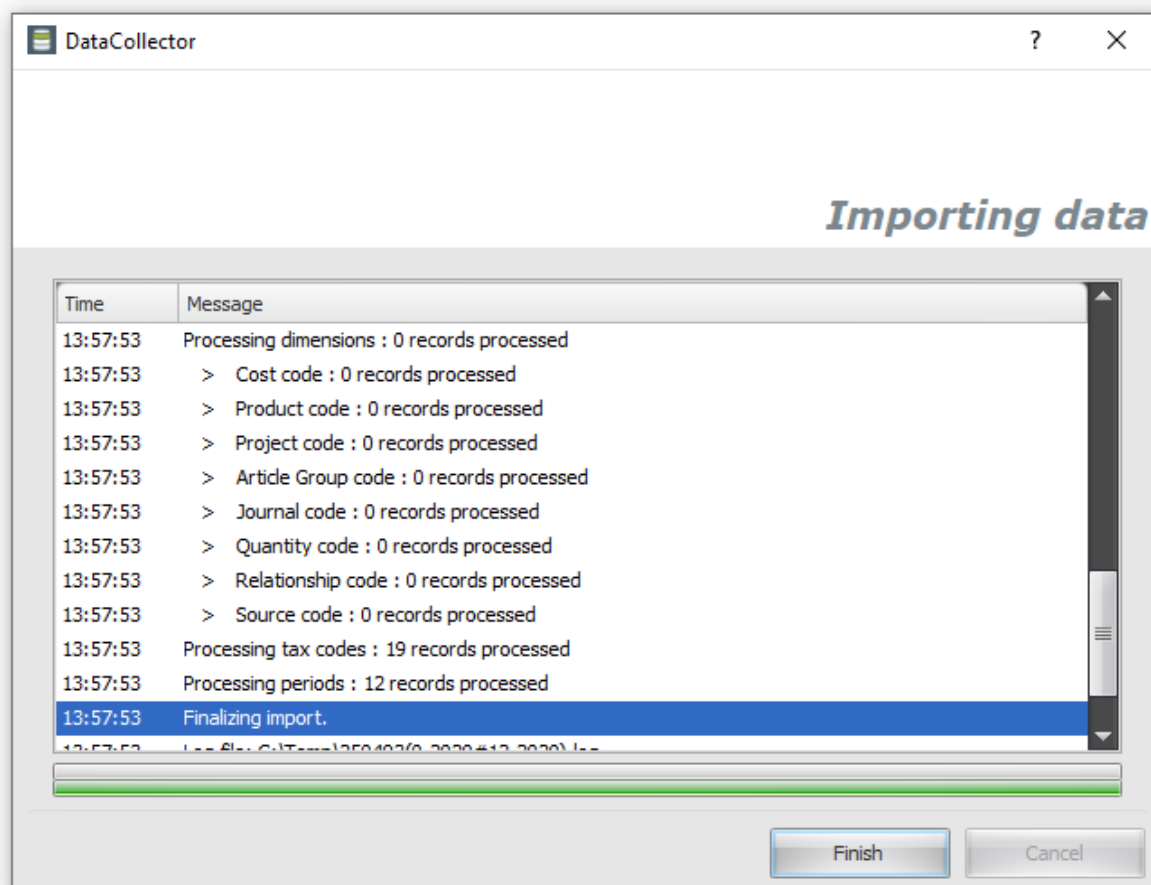
Select the location for the export file in the *File name* field.

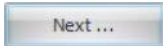
By default the data is encrypted. The user can add an additional password. This password has to be entered when the data is imported into Account Analysis. Select the *Use password* checkbox and enter the password in the *Password* field to activate the password protection. Confirm the password in the *Verify* field.

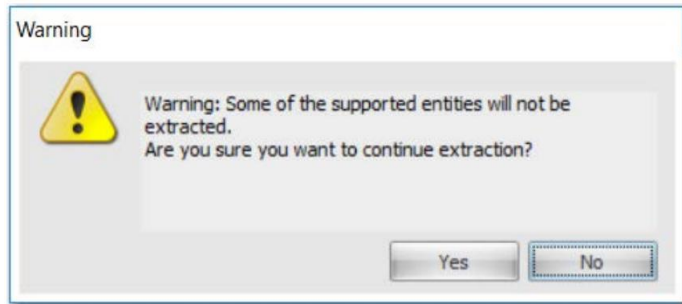
You can specify the client number and the client name in the *Client number* and the *Client name* fields. This data is used as reference when the files are imported into Account Analysis by the accountant. Your accountant will provide the required data. If you process the data in Account Analysis yourself you can leave these fields empty.

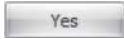

 The specified data, except the password, is saved. The file location is remembered in the *File name* field and not the file name, because the file name depends on the selected company and financial years.

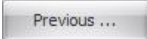
Next, click the  button. The data is exported.

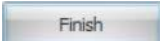


If you have not selected all the entities in the selection data (refer to the manual for the collector concerned), the following message is displayed when you click the  button:

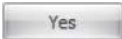
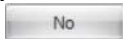


Click  to export the data. If you click , the data is not exported.

Click the  button to select the required entities.

After the data has been exported you click the  button. A dialogue box is displayed asking whether you would like to export any other data.



If you click , you return to the window where the financial package/ERP system is selected (refer to Step 1). Click , to close DataCollector.

3.4. Result

The file with exported data is compressed and encrypted and can be imported in Account Analysis. For example, exporting the data for financial year 2009 of company 99999 creates the CZR file below:

Name	Size	Type
 99999-Demonstratiebedrijf(0-2009#13-2009).log	2 KB	Text Document
 99999-Demonstratiebedrijf(0-2009#13-2009).czt	148 KB	CZR File